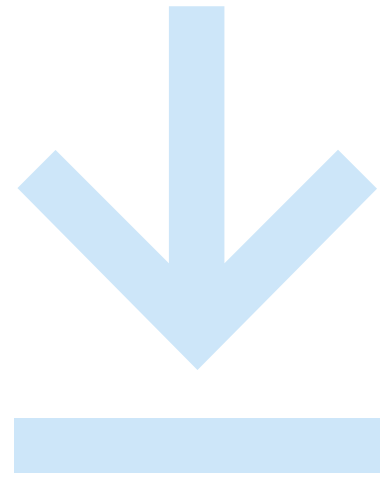




# Getting Up and Running with LeanDNA



LeanDNA is the industry-leading platform for understanding, prioritizing and collaborating on inventory management in the factory. Our solution provides efficient workflows between planners, buyers, and suppliers to improve on-time delivery, while reducing shortages and inventory excesses. To do so, LeanDNA aggregates and harmonizes data from your existing ERP system(s) to deliver actionable insights for both day-to-day tasks and proactive longer-term optimization.

At LeanDNA, we have the deep ERP expertise to harmonize your data from over 30 different ERP platforms such as SAP, Infor, Epicor, Oracle, and even AS400s. We've done the heavy lifting to quickly give you a single pane of glass to view all of your material procurement metrics, drive standardized work, and truly have complete visibility in weeks instead of years.

## Supported ERP Systems



*In addition to the ERP systems listed, our extensible platform and team expertise can help connect and leverage data from any ERP solution that you have in place.*

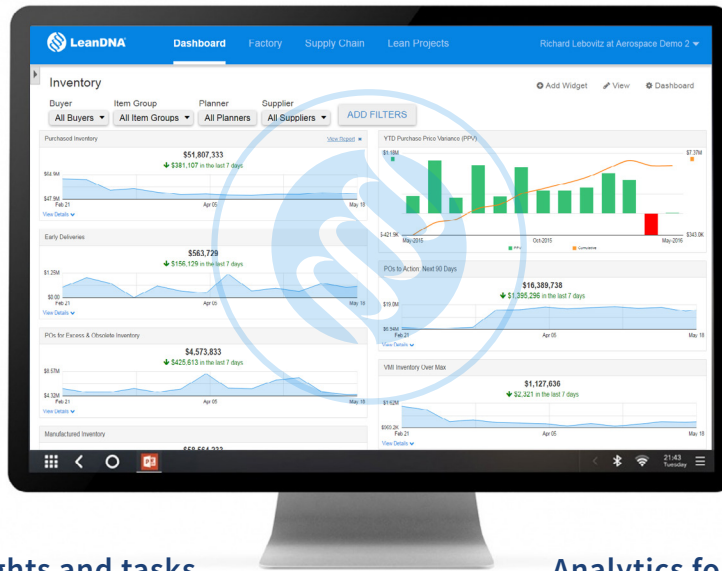
## ERP Data Leveraged by LeanDNA

- Master data
- Inventory
- Demand/Requirements
- Sales orders
- Manufacturing orders
- Purchase orders

## Insights, Analytics, and Data Management

ABC and XYZ and Plan for Every Part analytics to inform strategic decisions

Recommendations to improve data cleanliness, including prescriptive updates to order policies, lead times, ABC part classification, and more



Historical context to understand demand fluctuations for parts, inventory excesses, and shortages, as opposed to static, point-in-time signals

Transformed, normalized data across sites, product lines and ERP systems ensure standardization of work and data insights

Insights and tasks to collaborate directly with buyers, planners, execs and even suppliers outside of your organization

Analytics for day-to-day tasks and actions, including shortage prioritization, inventory management, and insights by part or supplier, and more

## Your Partner for Success

LeanDNA provides a highly-secure, scalable architecture and platform that leverages modern AI technologies and benefits from an agile development process to keep up with evolving supply chain visibility needs. Purpose-built workflows for business users ensure standardized work and collaborative interaction across planners, buyers, suppliers and executives. The SaaS platform is not only lightweight and simple to deploy, but also simple to administer and manage, including permissions for users inside and outside your organization. Our technical support teams are there to assist beyond deployment.

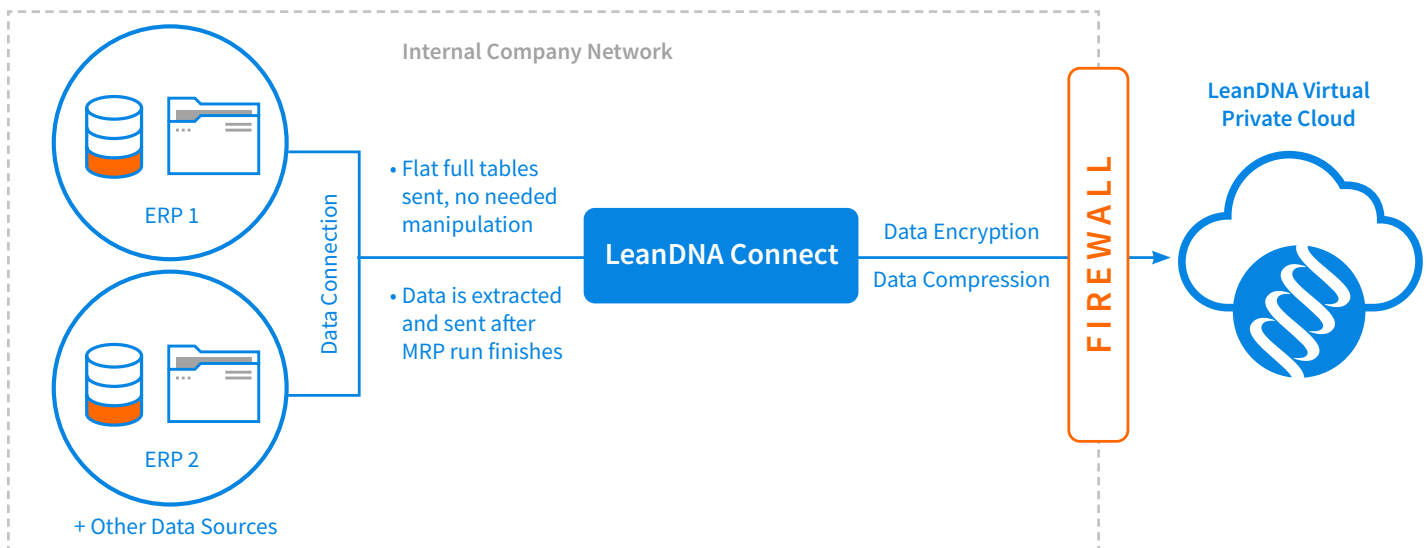
# Data Model into LeanDNA

LeanDNA ingests flat tables from your ERP systems, and supports a wide range of platforms out-of-the-box with pre-built connectors and transforms, while our data engineers ensure that your data mapping into LeanDNA's Universal Data Model. The simplest approach leverages LeanDNA's purpose-built middleware and decades-long industry expertise to get to value most quickly.

## Simple Setup: LeanDNA Connect

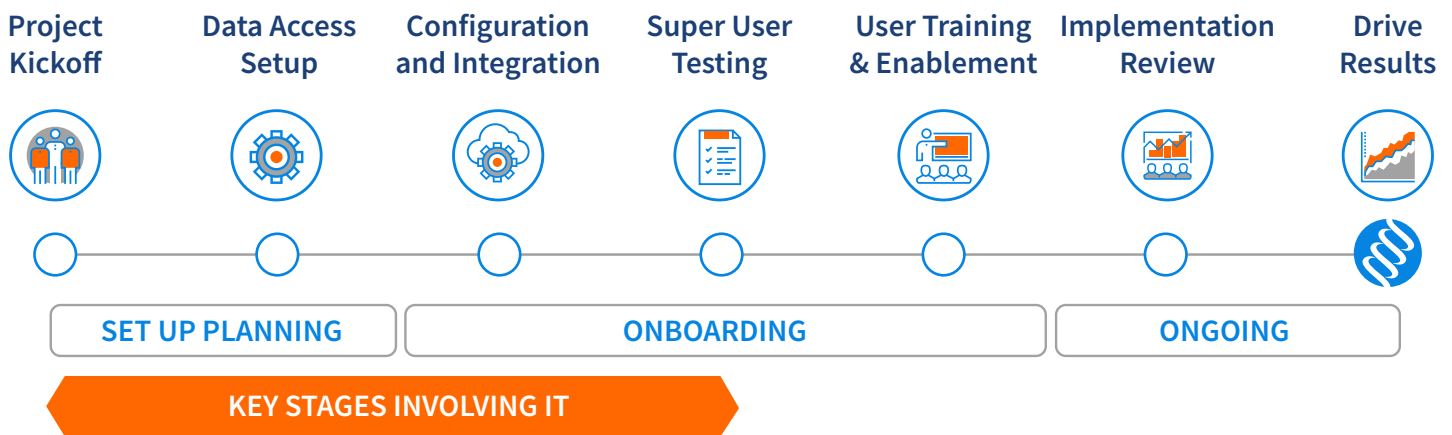
This easy-to-deploy data ingestion model pulls raw data tables from ERP systems and other sources, and is a scalable, high-performance method that can be easily expanded beyond pilot manufacturing sites. LeanDNA's Data Integration team handles virtually all of the implementation work to deploy and configure LeanDNA Connect and mapping your ERP data. This best practice integration approach is the quickest path to value and requires minimal support from your IT team and lowest integration effort.

LeanDNA Connect is a light-weight software application that resides on a virtual machine in your environment and uses standard ERP protocols to pull the relevant data tables from the ERP directly or from a replica on a scheduled basis with no performance impact on the ERP itself. Once completed, LeanDNA Connect compresses the files to minimize network utilization and securely transmits the data to LeanDNA.



# Project and Implementation Scope

LeanDNA's SaaS platform is quick to instantiate and provision. To get to value rapidly with the platform, LeanDNA has developed a proven and tested methodology for planning and onboarding. This collaborative partnership aims to ensure success through comprehensive upfront alignment and regular milestones and interactions throughout the onboarding process and beyond.



Customer IT teams are engaged from the Project Kickoff to Super User Testing phases, and IT's involvement is limited to:

- Granting of access to systems and data
- Firewall adjustment
- Service account creation
- Data mapping, if needed

While the process for a more sophisticated integration using specified middleware requires greater involvement and time commitment from IT, choosing the simpler LeanDNA Connect option requires approximately 10 man hours of work.

All of these options are significantly simpler and less time consuming than full ERP implementations, taking on average 92% less weeks to get deployed in a matter of weeks rather than months or years. In addition, business users benefit from less noise and simpler workflows as well as increased operational command of the supply chain, and the continuous maintenance and feature upgrades provided by LeanDNA mean that there is less need for BI team involvement and custom development and upkeep.

# ABOUT LEANDNA

LeanDNA is the leader in secure, intelligent analytics technology for supply chain professionals. Our collaborative, cloud-based software platform empowers global manufacturers to reduce shortages, optimize inventory, and improve on-time delivery and team efficiency. We provide a unified, shared view that makes it easy for buyers, planners, suppliers and executives to prioritize, understand, and collaborate on overcoming supply chain issues.

On average LeanDNA customers achieve:

**5** months  *Investment Payback Period*

**14%**  *Inventory Reduction*

**32%**  *Shortage Reduction*

**18%**  *Improvement in On-time Delivery*

---

Ready to see us in action? Contact us to learn more!

---



(512) 790-3360



team@leandna.com



www.leandna.com



**LeanDNA**



[linkedin.com/company/LeanDNA/](https://linkedin.com/company/LeanDNA/)



[twitter.com/LeanDNA/](https://twitter.com/LeanDNA/)



[facebook.com/LeanDNA/](https://facebook.com/LeanDNA/)



[instagram.com/Lean\\_DNA/](https://instagram.com/Lean_DNA/)